



Flat

**4, PARKGATE ROAD,
ST MARY'S, SW11 4PJ**

Per Month
£2,850

Available: 22nd September 2025

FEATURES



 3
  1
  1
  C

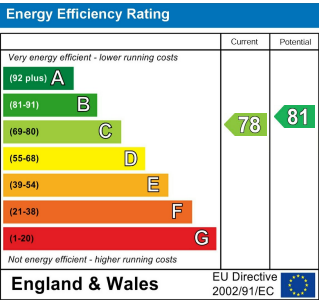
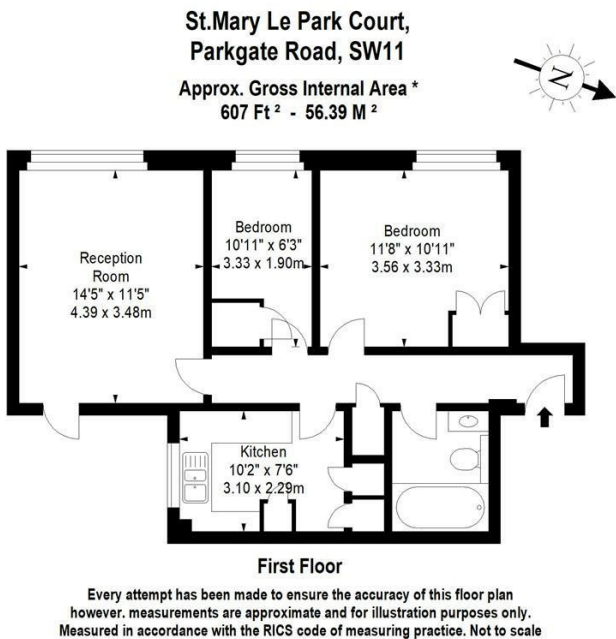
Huddletons

3 Bedroom Flat located in London

A bright and well-proportioned 3-bedroom flat ideally located in the heart of Battersea, just moments from the stunning Battersea Park and the River Thames. Situated on the first floor of a secure, purpose-built block with lift access and a communal roof terrace, this spacious flat offers excellent living for professionals, sharers, or a small family.

Call us on
0207 205 4411
info@huddletons.com
<http://www.huddletons.com>

Council Tax Band
C



Agents Note: Whilst every care has been taken to prepare these particulars, they are for guidance purposes only. All measurements are approximate and are for general guidance purposes only and whilst every care has been taken to ensure their accuracy, they should not be relied upon and potential buyers are advised to recheck the measurements.

Huddletons